

THE CHILDREN'S GUILD....

Empowering children with the vision to see, the courage to try, and the will to succeed

What is The Children's Guild, Inc., Prince George's Campus?

The Children's Guild, Inc., Prince George's campus is a special education elementary and middle school approved by the Maryland State Department of Education for boys and girls ages 5-16 in kindergarten through eighth grade.

It also provides a high school program for students with autism in grades 9-12 allowing students to attend a high school that will meet their special needs right in their community.

We provide services to children who have an emotional disability and exhibit behaviors that can interfere with their regular school programs, including children on the autism spectrum. Children are referred to us by the public school systems through the Central IEP Team process.

Our Philosophy of Education

We want our children to learn that there is a connectedness to life and a systemic nature to many of the problems one seeks to solve. We model this through integrated instructional material in an experiential way to help students see connections across subjects and relate what they learn to their lives. We emphasize living life in a responsible way and serving a cause larger than oneself.

Our students are encouraged to contribute to their family, the classroom, the school and the community. We also believe that parents are the child's first and most important teacher and that children whose parents are involved in their educational program are the most successful academically, socially, and emotionally. Therefore, The Guild encourages and supports each family's efforts to be involved in the academic life of their child.

Our Program Goals

The goals of our program are to prepare students with the tools to be successful in the 21st century and have the knowledge and confidence to function in an interconnected, dynamic global economy. We educate our students to:

- Communicate effectively,
- Acquire a core of knowledge,
- Become motivated learners,
- Feel a sense of well-being,
- Live responsibly, and
- Prepare to return to a less restrictive setting

What Does our School Program Provide?

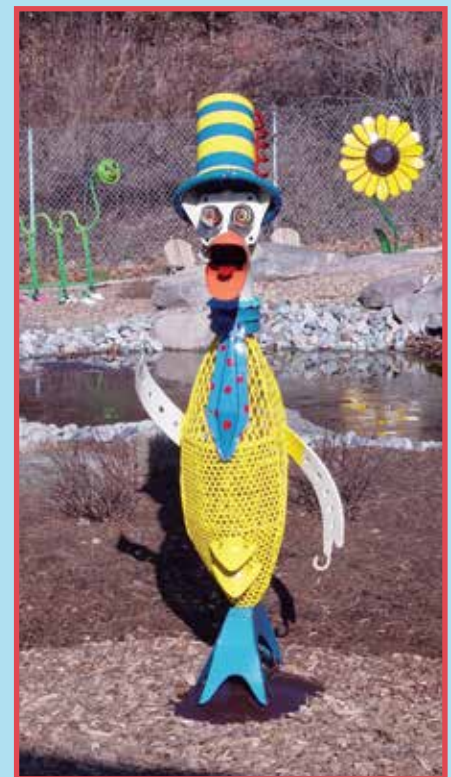
Curriculum

The curriculum offered is consistent with local Maryland and Washington, D.C. public school curricula, and is also aligned with the Maryland Common Core State Curriculum which includes:

- English/language arts
- Math
- Science
- Social Studies

OUR INSTRUCTIONAL PROGRAM IMPLEMENTS:

- Maryland Common Core Standards
- Project-based learning using authentic real world problems
- Brain-based learning strategies
- Varied instructional delivery for entire classrooms, small groups and individual students
- ISP/FBA/BIP for each student
- Field work and collaboration with experts in the field
- Instruction aligned to learning style of each student
- Technology enriched programming
- Infusion of the arts: art, music, drama and physical education



Behavioral Motivational Program

A COMPREHENSIVE BEHAVIOR MANAGEMENT PROGRAM

- Positive Behavior Intervention and Supports (PBIS)
- Collaborative Problem Solving
 - Identification of lagging thinking skills
 - Collaboratively develop a plan with student to teach lagging skills
- Social Skills training
- Restorative Practices
- Certified Crisis Intervention Program
- Data Analysis

Clinical and Related Service

- Individual and group therapy
- Speech/language therapy
- Crisis intervention services
- Occupational therapy
- Physical therapy
- Psychiatric evaluation and consultations
- Nursing services
- Case management services

Family Services

- Parent counseling
- Family counseling
- Parent support groups
- Referral to community resources
- Assistance for students transitioning to their next placement

Additional Services

- Transportation under special arrangements
- Free or reduced cost breakfast or lunch (if eligible)



THE CHILDREN'S GUILD, INC., PRINCE GEORGE'S CAMPUS
5700 SARGENT ROAD
CHILLUM, MARYLAND 20782

CONTACT: SARAH DAVIS, LIAISON, ADMISSIONS AND CUSTOMER RELATIONS
443-801-5467 OR DAVISS@CHILDRENSGUILD.ORG
WWW.CHILDRENSGUILD.ORG

The Children's Guild, founded in 1953, is approved by the Maryland State Department of Education, accredited by the National Commission for the Accreditation of Special Education Services (NCASES), and licensed by the Department of Health and Mental Hygiene as an outpatient mental health clinic. The Guild is an affiliated agency of United Way of Central Maryland, the Maryland Association of Nonpublic Special Education Facilities (MANSEF), and the Maryland Association of Resources for Family and Youth (MARFY)

The Children's Guild does not discriminate based on race, color, gender, age, religion, disability, sexual orientation or national origin in the admission of students or employment of staff.